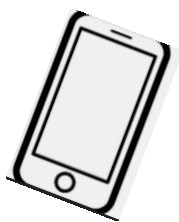




## COLLEGE FIT FINDER

- Online Player Profile
- Team Brochure
- Player Search App
- Database of Scouts

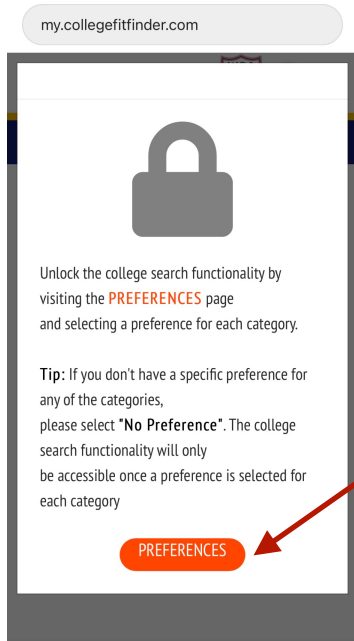
# PLAYER PROFILE SET UP TUTORIAL FOR CELL DEVICE



# PLAYER TUTORIAL FOR I-PHONE

## Using College FitFinder

**STEP 1: Login** using your username. Your **username will be used for “username” and “password”**. If you see a screen with “Preferences” in orange, click on “preferences”.

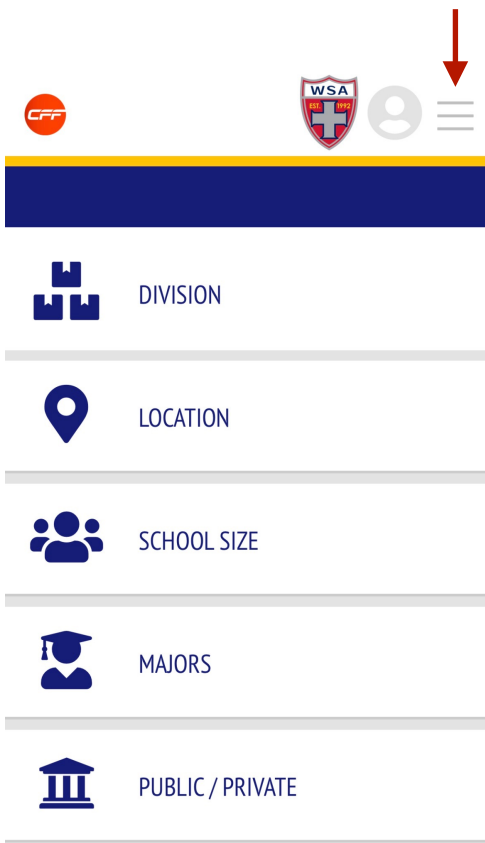


**LOGIN:** <https://my.collegefitfinder.com/login>



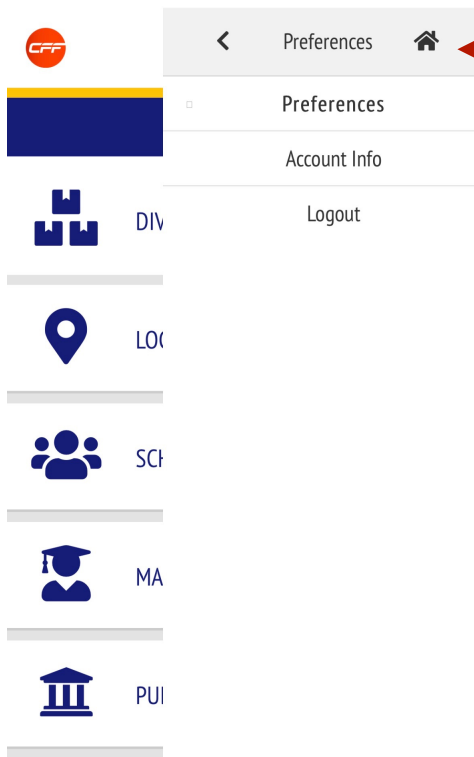
Preferences

**STEP 2: Click on 3 horizontal lines.**



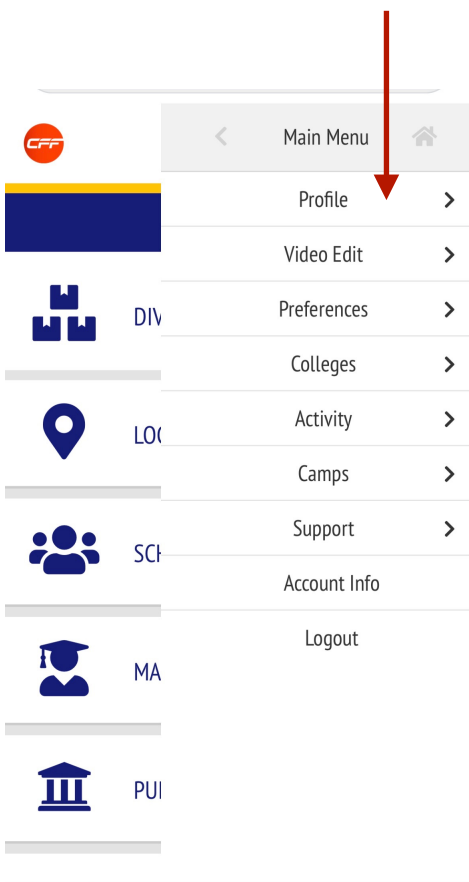


**STEP 3:** Click directly on actual **“Home Button”** to the right of “preferences”.

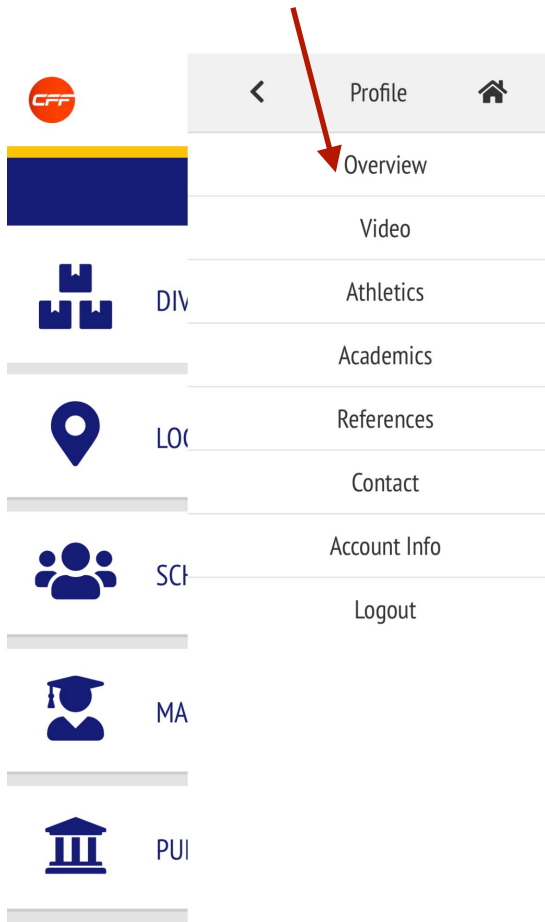


Carefully click directly on the **HOME button.**  
Be sure you click **directly on the “house”**

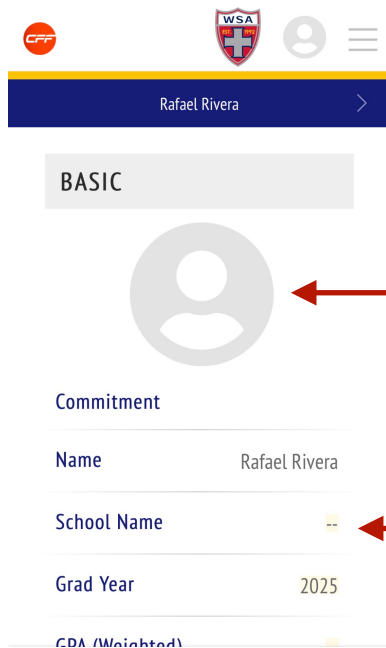
**STEP 4:** Click on **“Profile”**.



**STEP 5:** Click on **“Overview”**.



**STEP 6: Edit your information.** Click on the **“two dashes”** to edit your information. To revise this info in the future click directly on the info. To **upload your photo** click on the **“photo profile”**.



To **upload photo** click on the **“photo profile”**.  
Be sure your photo complies with your team standard and is in uniform.

These **“two dashes”** can be clicked on to edit the info.  
In the future to revise the info you can click directly on the text of the info.

**STEP 7: Edit your EMAIL and CELL #. Important Step!** Click on the **3 horizontal lines** in the upper right. Then click on **Account Info** from the dropdown menu.



The image shows two screenshots of a mobile application interface. The left screenshot shows a user profile for 'Rafael Rivera' with a 'BASIC' header and a list of fields: Commitment, Name (Rafael Rivera), School Name, Grad Year (2025), and GPA (Weighted). A red arrow points to the three horizontal lines in the top right corner. A box labeled '3 horizontal lines' is positioned below the arrow. A large red arrow points from the left screenshot to the right screenshot. The right screenshot shows the same profile page but with a dropdown menu open from the three horizontal lines. The dropdown menu contains the following options: Profile, Overview, Video, Athletics, Academics, References, Contact, Account Info, and Logout. A box labeled 'Account Info' is positioned above the 'Account Info' option in the dropdown menu, with a red arrow pointing to it. The URL 'my.collegefitfinder.com' is visible in the browser address bar.

**STEP 8: Enter your EMAIL and CELL NUMBER.** This is important so college scouts can contact you!

The image shows a screenshot of the 'ACCOUNT INFO' page in the mobile application. The page has a 'BASIC' header and a list of fields: Account Type (Club Player), Club (West Side Alliance SC), Name (Rafael Rivera), Email (rafael.rivera@wsasoccer.com), Phone ((918) 999-9999), and Username (rafaelrivera1). At the bottom, there are two buttons: 'Logout' and 'Change Password'. Two red arrows point from the top of the page down to the 'Email' and 'Phone' fields, indicating where the user should enter their information.